

House for Sale to Piana Crixia Zone: Pontevecchio



120 square meters | Bathrooms: 1 | Bedrooms: 2 | Rooms: 8

Ligurian Langhe, Piana Crixia on the hills behind the Ligurian Sea, in a very convenient area of the village, but with great privacy, for sale detached house with land and another building with warehouse and wood-burning oven.

The house is accessed by a gate that fences off a large part of the property.

The entrance is on a beautiful arched portico, where we find on the ground floor, a spacious tavern, a large garage and access to the stairwell, which leads to the living area on the first floor.

Going up the marble staircase, we arrive at the living flat, which consists of a kitchen with a balcony that runs along part of the front side of the house, a double living room, 2 large bedrooms, a bathroom with 1980s finishings and a storage room with access to the attic.

Despite the fact that the property dates back to the 80s with period details (wallpaper, wood-effect ceramic floors, first type aluminium window frames), it is perfectly maintained, so it is habitable immediately and usable in all its interior and exterior spaces.

The attic is high at the ridge, the façade was recently redone and the roof is always checked and maintained.

Heating with g.p.l. cylinder heater and boiler, but methane is provided at the gate, only the connection pipe between the gate (where the pipe arrives) and the house is needed. Communal water and sewerage.

All around garden of 1,646 sqm well kept, with fountain connected to the aqueduct. Still another building with oven, further garage and barn above, behind the house.

Beautiful location and southern exposure on a green hillside which is part of the Piana Crixia regional park where we can find the only calanque formations in Liguria and a very rich variety of wild flora with the presence of 13 types of orchid.

Ideal as a first or second home, the sea can be reached in 30 minutes and the ski slopes in about 60. Beautiful opportunity.

Property details

Reference code: 5871	For Sale/For Rent: Sale
Type (Apartment, villa, etc): House	Region: Liguria
Province: Savona	Municipality: Piana Crixia
Zone: Pontevecchio	Price: € 155.000
Total sqm: 120 square meters	Bedrooms: 2
Bathrooms: 1	Rooms: 8
State of conservation: Decent	Floor type: On two levels
Total floors: 2	Central heating: Self regulating
Parking space: Covered	Building age: 1990
Current condition: Empty at time of deed	Available: Yes
Terrace: Present	Garden: Private, 1.646 square meters
Distance to sea: 30 meters	Kitchen: Habitable
Box: Single	

Features

Terrace: 20 m ²	Closet	Cellar
Fireplace	Electrical system: Up to code	Shower
Aluminium frames	Blinds	Terrain type: Flat
Additional positions: In the countryside	Acces	View
Water: Municipal	Sewerage: Communal	Vegetable garden
Gas: Not specified	Well	Roof
Light	External area	Parkingspace
Garage	Flooring	Distance to sea
Distance to ski resorts	Distance to hospital	Water bath
Terrain: 1646 m ²		

Nearby

Gyms	Spas	Soccerfields	Sport complexes
Tenniscourt	Cycle paths	Playgrounds	Railway station
Public transport	Kindergarden	Elementary school	Middle school

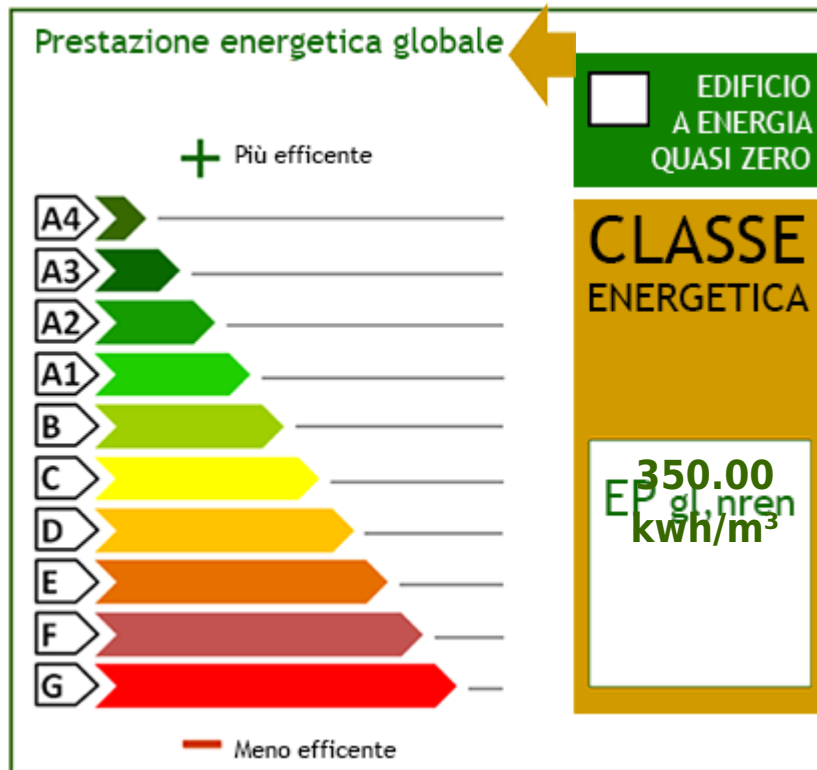
High school

Bar

Postal offices

Commercial center

Municipal offices



Ricordiamo che le informazioni contenute nella scheda e riguardanti gli immobili proposti sono generali, non sono vincolanti e non hanno natura contrattuale

Immobiliare IPI

Via Fratelli Francia, 26 - Cairo Montenotte (SV) - Phone number 0195090590 Fax 019504378

info@immobiliareipi.it - <https://www.immobiliareipi.it>

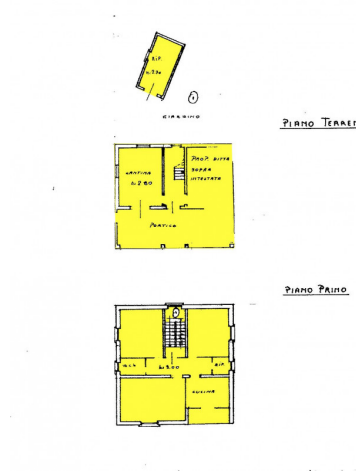
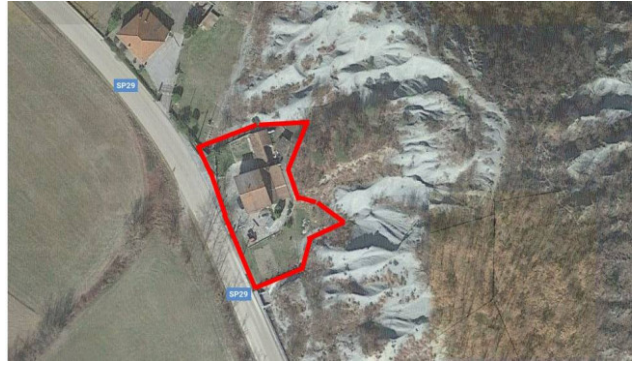
V.A.T. 01083550093











PIANO TERRENO

